

PLANON

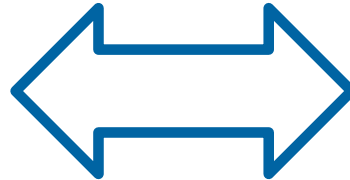
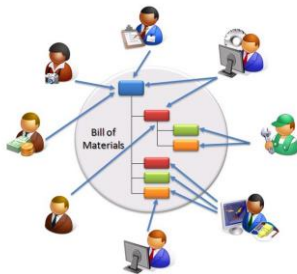
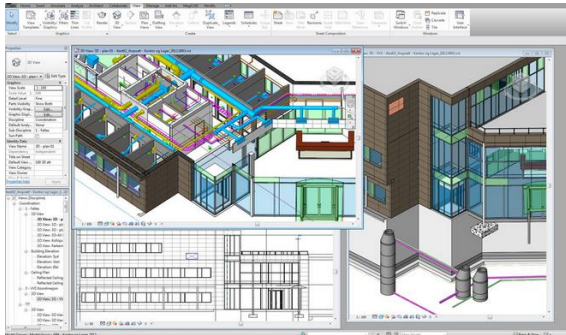
AIM FOR THE OPTIMUM



MAKING THE MOST OF BIM

BIM POSITIONING: DIGITAL BUSINESS

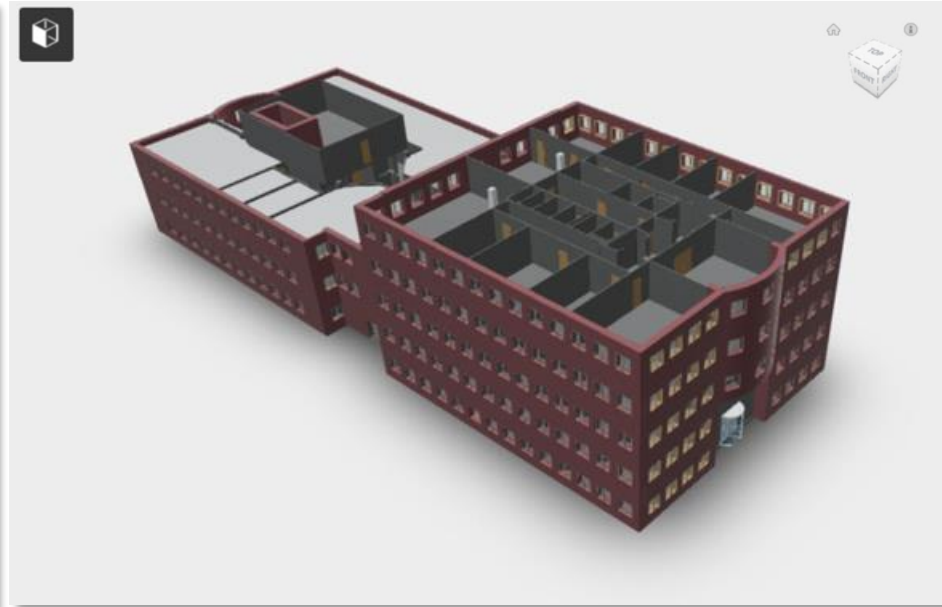
Create



Operate

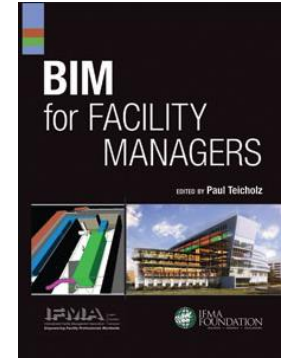
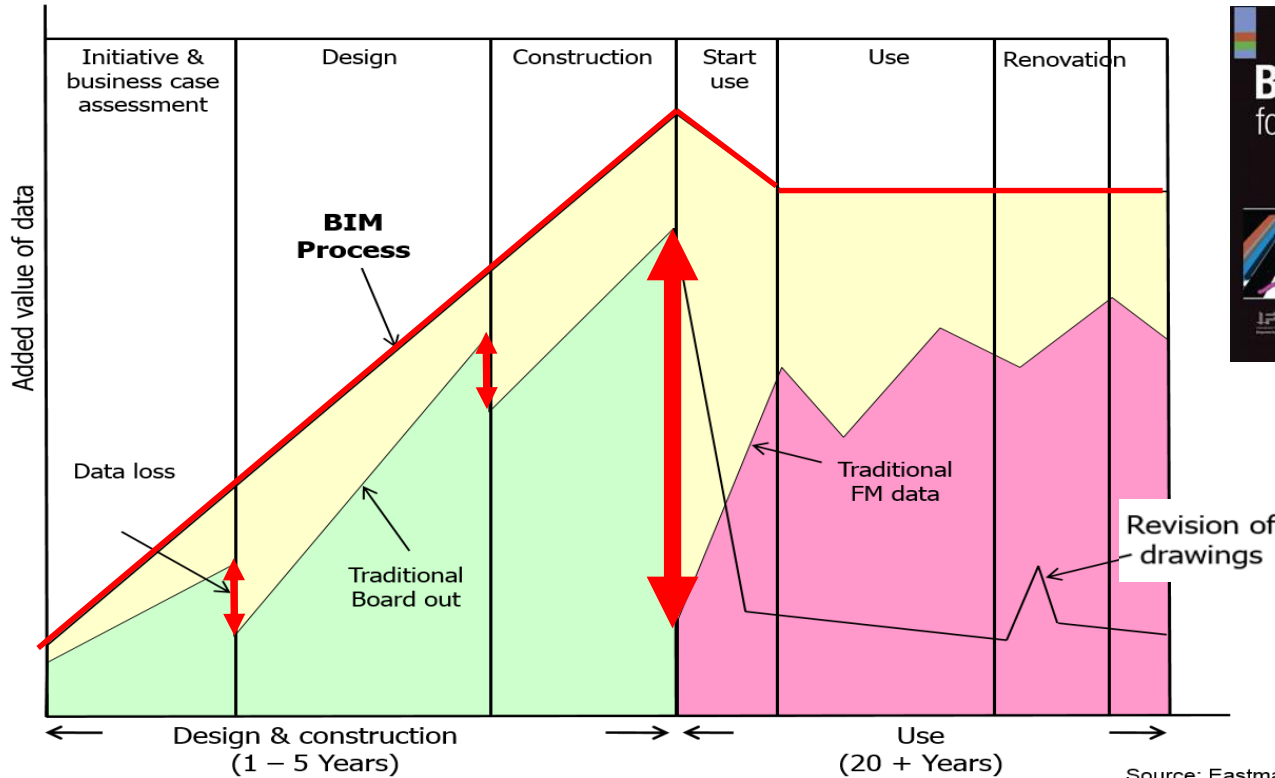


BIM FOR RE & FM: ADDED VALUE



Autocad A360 Viewer

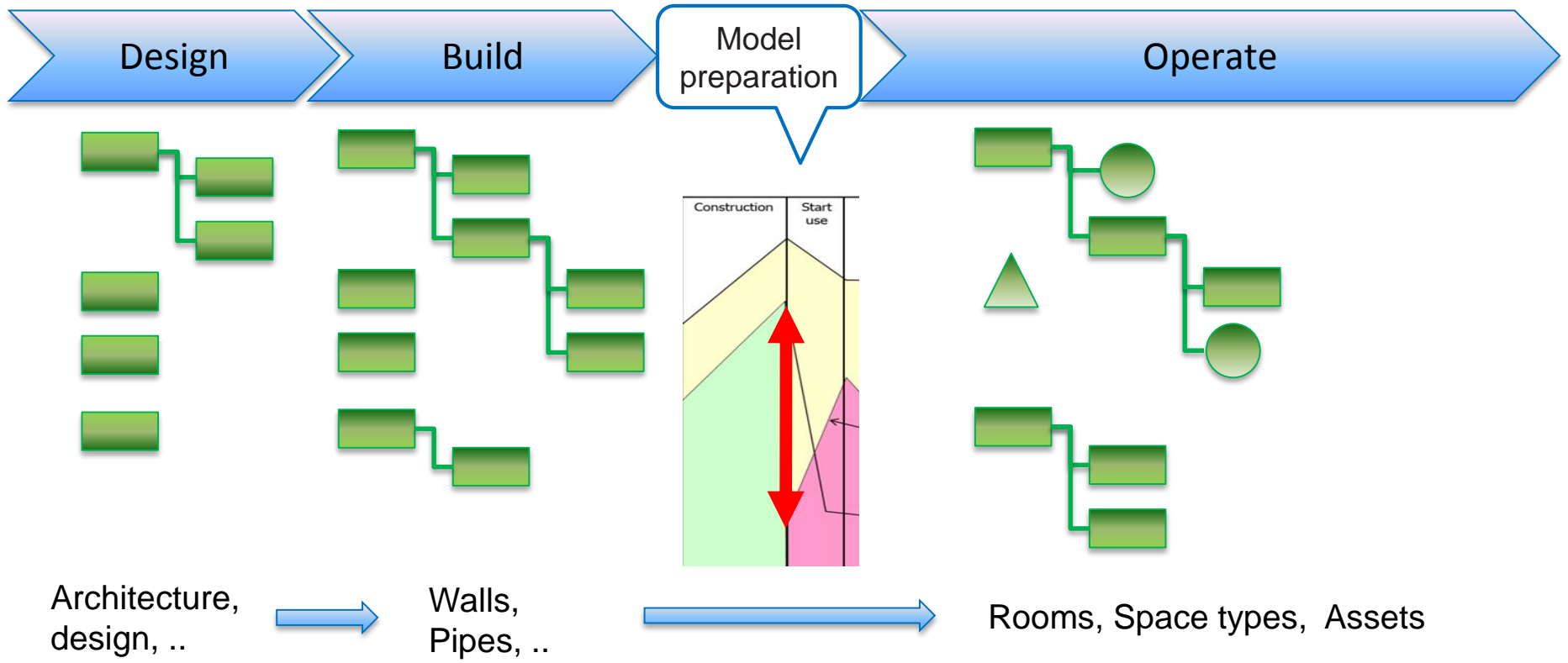
BIM LIFE CYCLE PROMISE



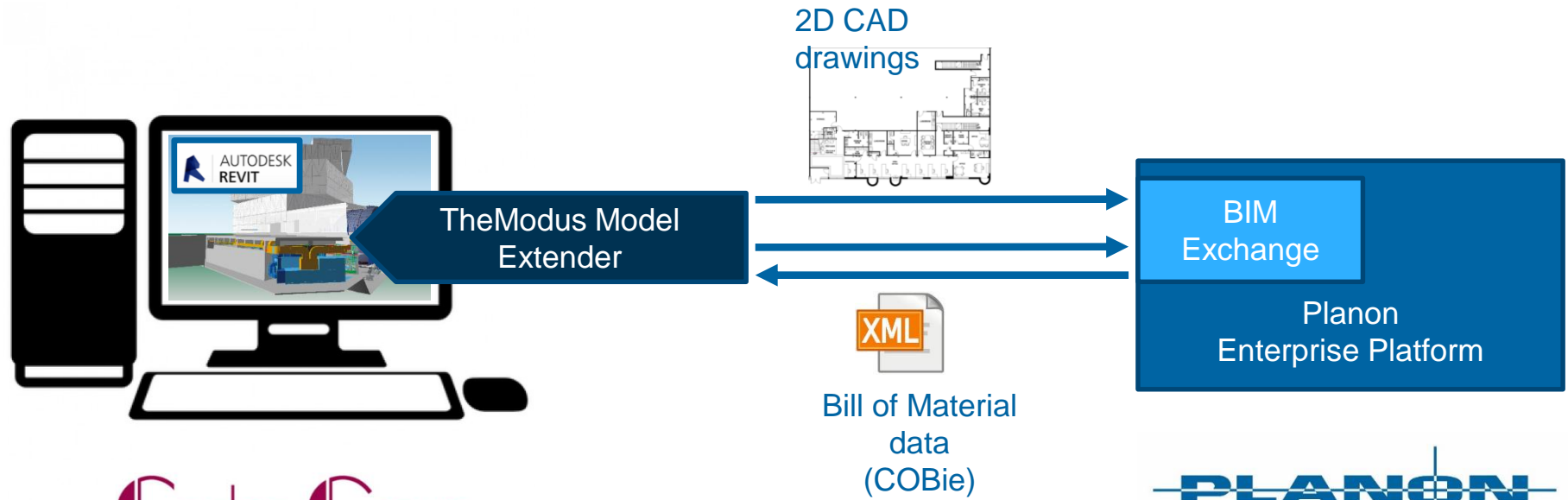
Paul Teicholz:

‘An inordinate amount of time is spent locating and verifying specific facility and project information from previous activities’

FROM 'AS BUILT' TO FM INFORMATION



PLANON CONNECT FOR BIM



FEATURES

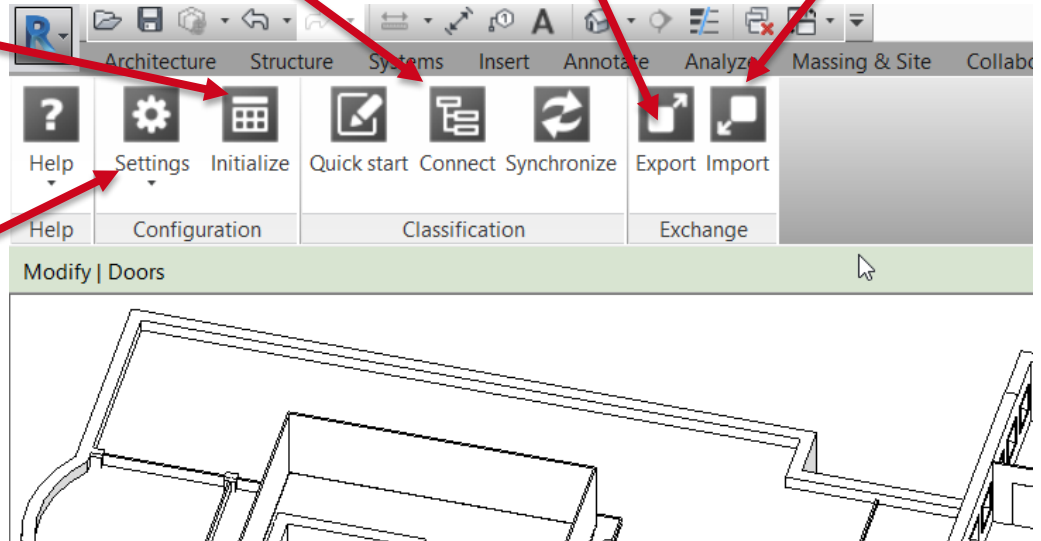
Check the model

Map elements to
classifications/
references

Export-Revit to
Planon

Import Planon-
information

Manage own
classifications/
references



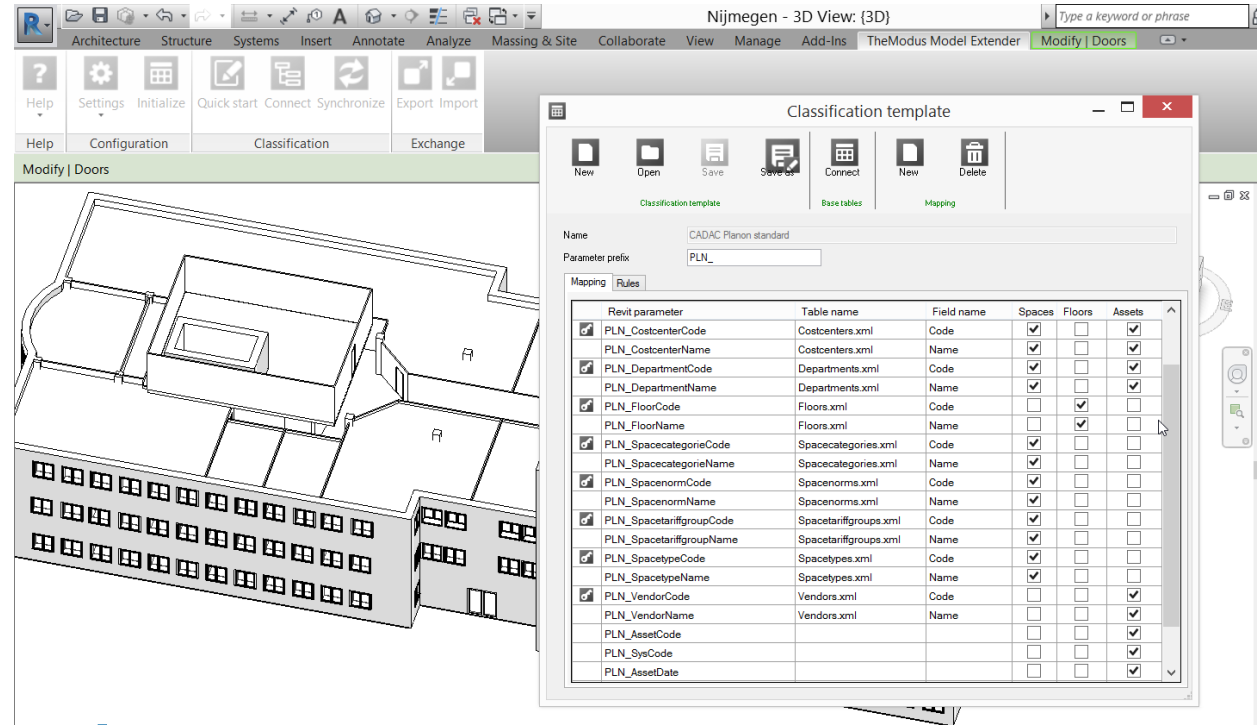
CLASSIFICATIONS

Possible to map:

- Floors
- Spaces
- Assets (building elements, installations & furniture)

Features:

- Define what to sync
- Add free tables/fields



Revit: Model Extender

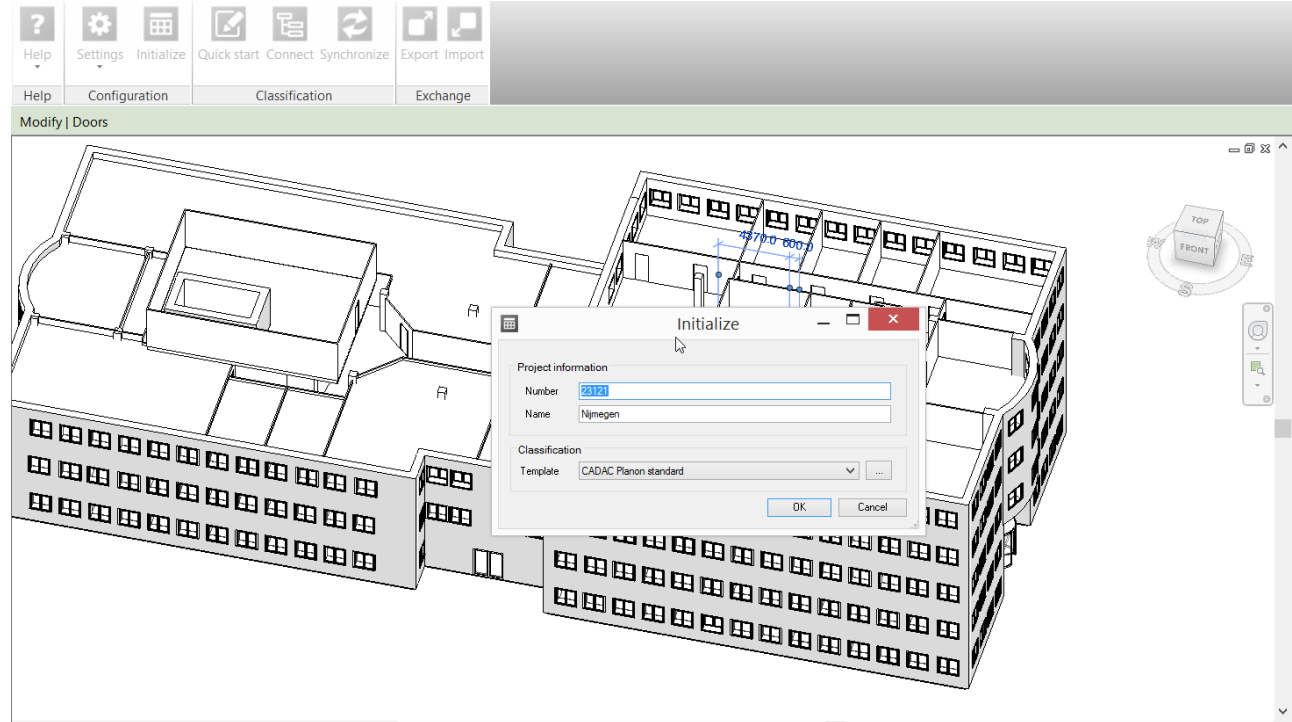
INITIALIZE (CHECK THE MODEL)

For every model:

- Define project number
- Classification standard

Checks on:

- Rooms/Spaces
- Automatic reference of Spaces & Floors to Assets
- Ungrouping of assets/spaces



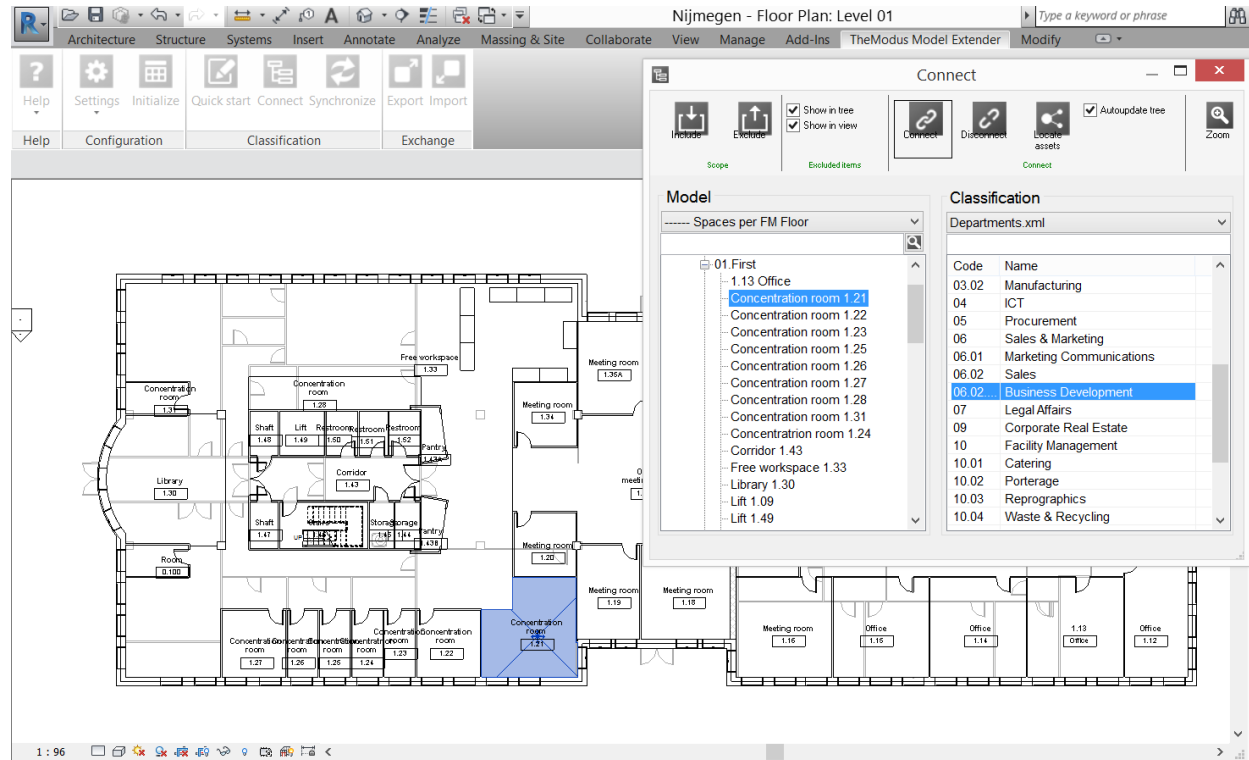
CONNECTOR (ADD REFERENCES)

Enrich the model with Planon information:

- Departments
- Vendors
- Costcentres
- Etc.

Extra features:

- Rule based connecting
- Highlight in the model



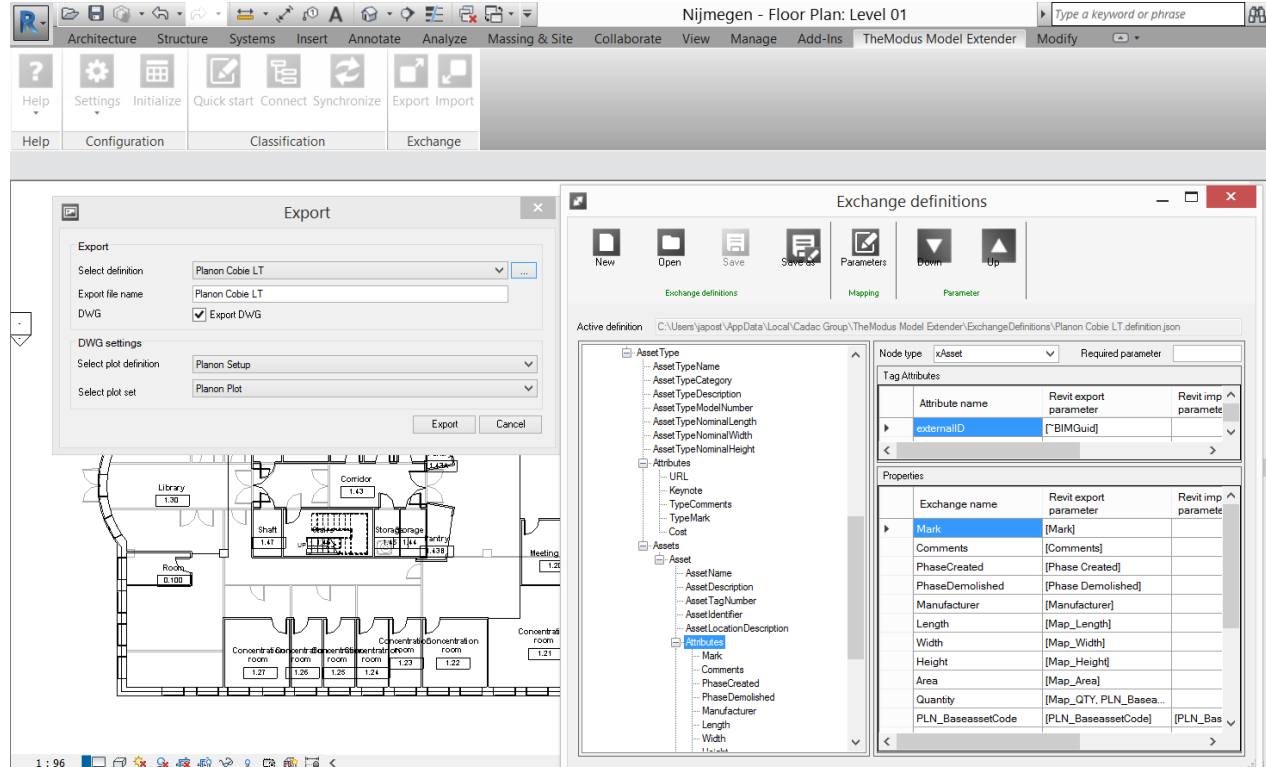
EXPORTS MODEL INFORMATION

Standard export definitions:

- Drawings (DWG)
- Building elements (XML)
- Unique assets & additional information (XML)

Additional features:

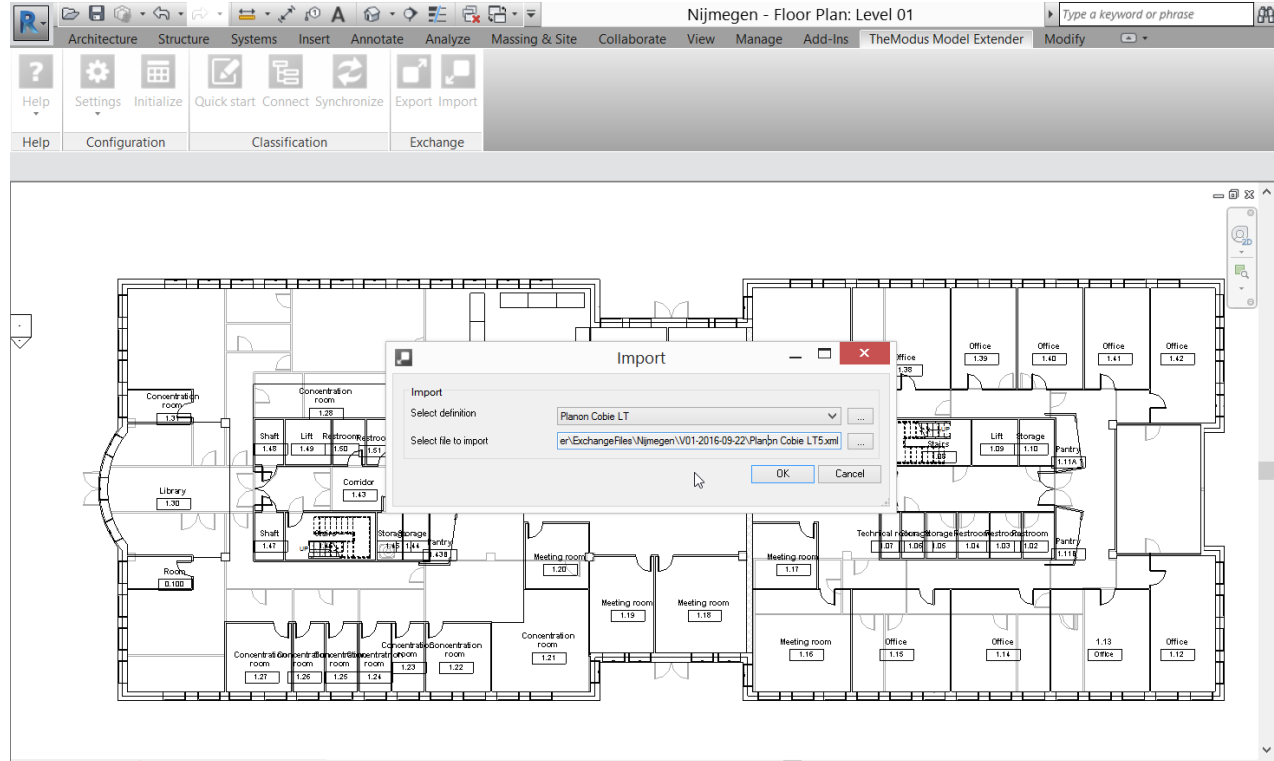
- Define what type of details to export (m1/m2/m3)
- Add defaults



IMPORTS TO PLANON

Standard import definitions

- Clustered building elements (XML)
- COBIE file (updated elements)



FEATURES

Import building elements

- Export library to Revit
- Import building elements
- Cluster elements
- Export GUID's

CAD launch centers

- Import floors/spaces (life cycle)
- 2D CAD integration

BIM Launch centers:

- Template definition
- Import/Export

The screenshot displays the PLANON UNIVERSE software interface. On the left, a navigation menu is visible with the following categories and items:

- Building Elements**
 - Import / Export
 - Cluster elements
- CAD integration**
 - Drawing definitions
 - Import definitions
 - Space standards
 - Thresholds
 - Scheduled import
- BIM exchange**
 - BIM source definitions** (highlighted)
 - BIM import / export defini...

The main content area shows the **BIM source definitions** configuration page. It includes a breadcrumb trail: **BIM source definitions** > **BIM business objects** > **Details**. Below the breadcrumb, there is a search bar with the text "No filter" and a search filter field containing "Asset type nox". A refresh button is located below the search bar. The main content area displays a table of BIM source definitions:

Name	BIM source definition.Code
<input type="checkbox"/> BIM - linked business objects (4)	
Base Assets	BIM01
Floors	BIM01
Properties	BIM01
Spaces	BIM01

BIM EXCHANGE

BIM Import

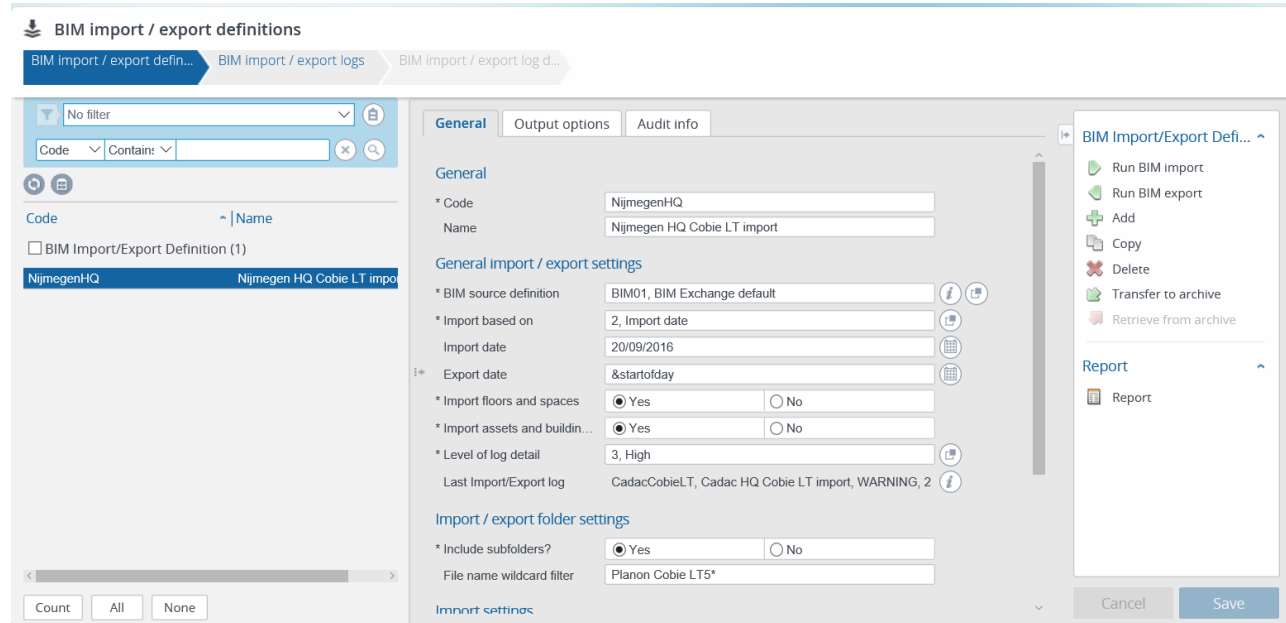
- Import COBIELite XML from Revit

BIM Export

- Export COBIELite XML to Revit
- Added (condition) data

Features:

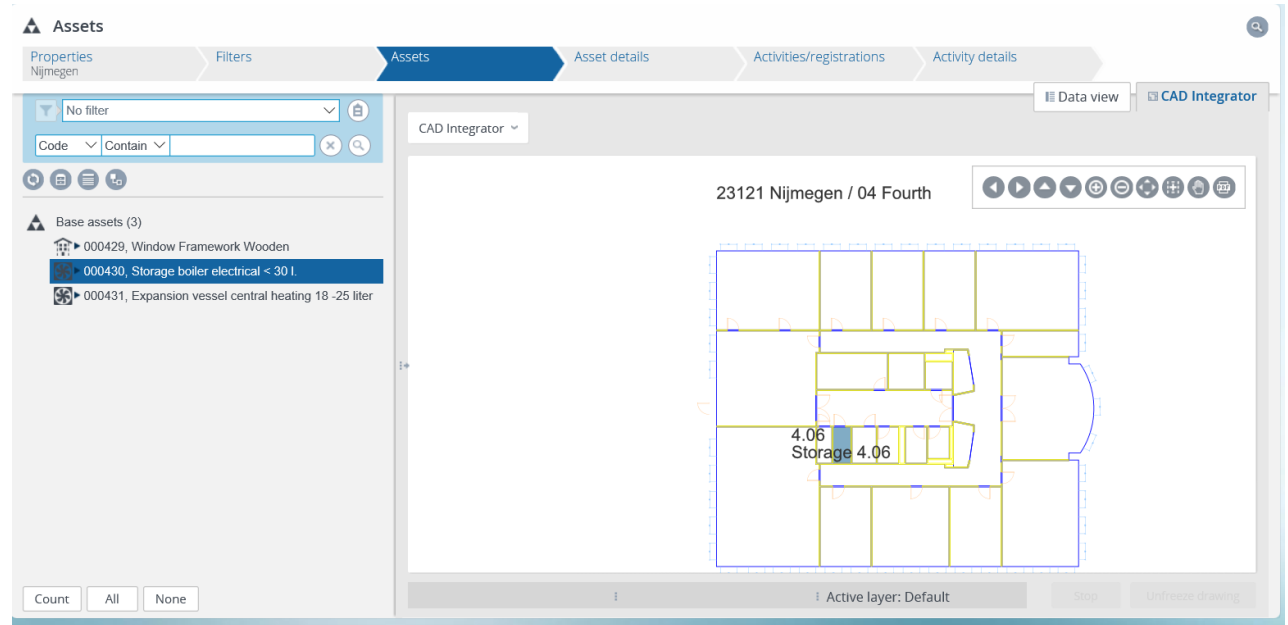
- Scheduled import/exports
- Choose what to import



RESULTS IN PLANON

Assets

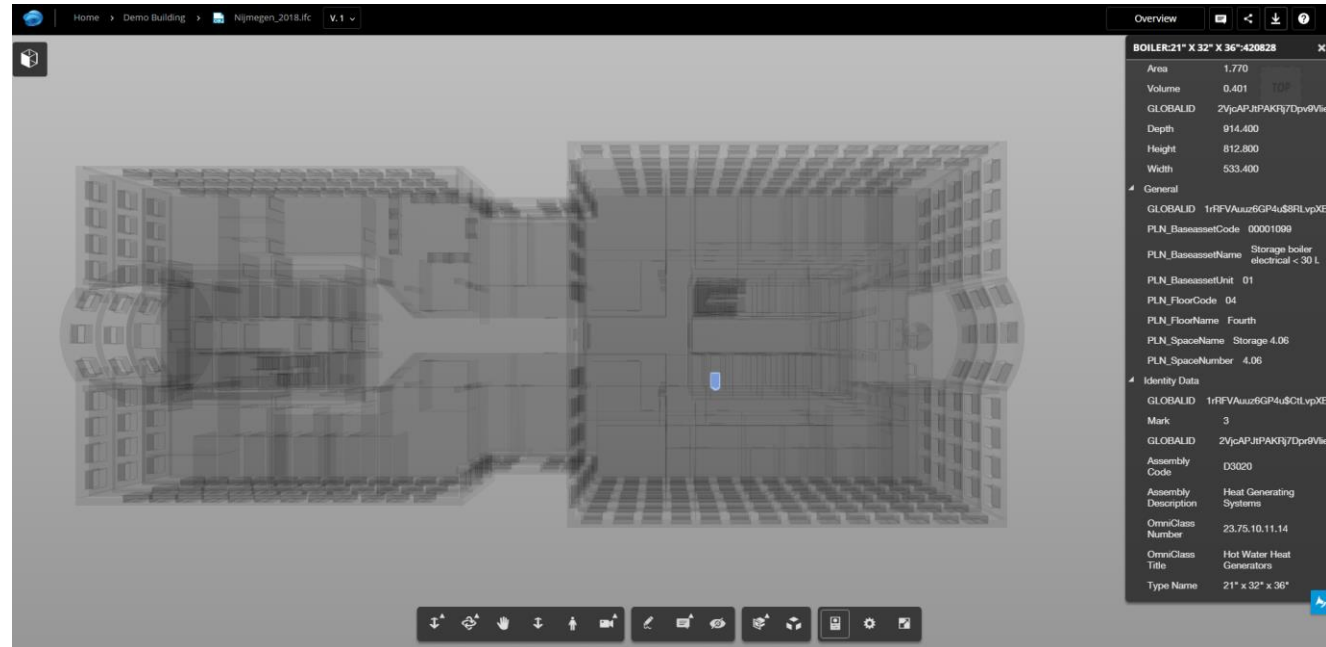
- Generated building elements with Maintenance plan
- Location of installations in 2D



RESULTS IN PLANON

Assets in 3D

- Find asset with asset code from Planon
- View PLN synced details in properties of assets

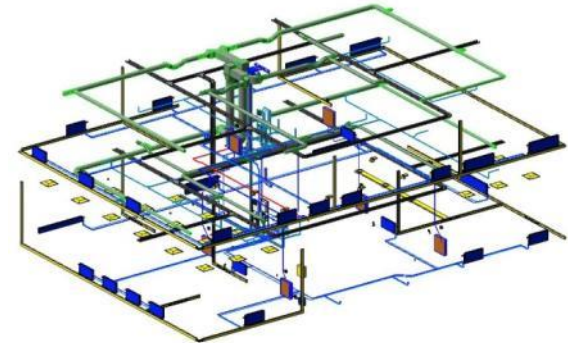
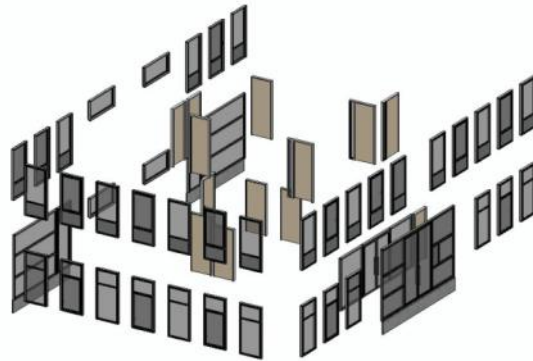
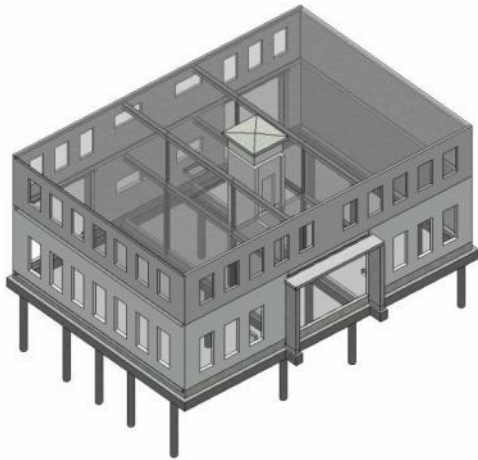


BIM & ASSET MANAGEMENT: CLUSTERING

Asset management

Long Term Maintenance Plan

Estimated costs, Schedules



ASSET MANAGEMENT & PROCESSES

The screenshot displays the Planon ProCenter web application interface. The main content area shows the '01 Assets' section with a breadcrumb trail: Properties > Vanen, HQ Cadac Group AEC > Filters > Assets > Asset details > Activities > Activity details. The 'Assets' tab is active, showing a list of base assets on the left and a detailed view of a selected asset on the right. The selected asset is '002599, Window >300mm paintwork int/ext'. The detailed view includes fields for Standard asset, Code, Description, Main asset, Type, Status, Classifications, Details, Condition, and Latest condition score. A 'Data view' and 'CAD Integrator' panel is visible on the right side of the asset details view.

Section	Field	Value
General	Standard asset	3120.100.30, Window >300mm paintwork int/ext
	Code *	002599
Classifications	Asset classification	31, External wall opening
	Alternative classification	B0, B0 - Interior
	Classification group *	-, (empty)
Details	Property *	1001, HQ Cadac Group AEC
	Quantity *	54.12
Condition	Deterioration curve	STD, Standaard
	Required condition score	6
Latest condition score		1

- ✓ Bill of materials
- ✓ Relevant data
- ✓ Location
- ✓ Grouping
- ✓ Contracting
- ✓ Depreciation
- ✓ Malfunctions
- ✓ Maintenance
- ✓ Costs
- ✓ Projects
- ✓ Energy
- ✓ ...

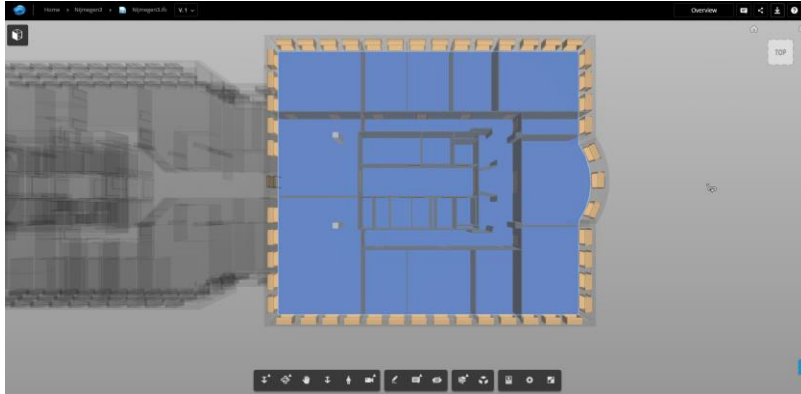
MAINTENANCE: PLANNING & EXECUTION

Code	Description	Asset / build...	Ma...	Asset / build...	01/04/2020																												
					2021				2022				2023				2024				2025				2026				2027				
					Q4	Q1	Q2	Q3	Q4	Q1	Q2	Q3	Q4	Q1	Q2	Q3	Q4	Q1	Q2	Q3	Q4	Q1	Q2	Q3	Q4	Q1	Q2	Q3	Q4	Q1	Q2		
3120.100.30R	Window >300mm paintw...	002598	CB	3120.100.30																													
3120.100.30R	Window >300mm paintw...	002599	CB	3120.100.30																													
2100.100.00C	External wall general clea...	002600	TB	2100.100.00																													
2100.100.00L	External wall general repl...	002600	CB	2100.100.00																													
2100.100.00C	External wall general clea...	002601	TB	2100.100.00																													
2100.100.00L	External wall general repl...	002601	CB	2100.100.00																													
7410.110.00B	Toilet block total mainten...	002602	TB	7410.110.00*																													
7410.110.00Z	Toilet block total renovate	002602	CB	7410.110.00*																													
7410.110.00B	Toilet block total mainten...	002603	TB	7410.110.00*																													
7410.110.00Z	Toilet block total renovate	002603	CB	7410.110.00*																													
7410.110.00B	Toilet block total mainten...	002604	TB	7410.110.00*																													
7410.110.00Z	Toilet block total renovate	002604	CB	7410.110.00*																													
7410.110.00B	Toilet block total mainten...	002605	TB	7410.110.00*																													
7410.110.00Z	Toilet block total renovate	002605	CB	7410.110.00*																													

- ✓ Budgeting
- ✓ Scenario planning
- ✓ Execution
- ✓ Work orders
- ✓ Outsourcing
- ✓ Monitoring
- ✓ Cost control
- ✓ Laws and Regulations
- ✓ Reporting
- ✓ ...

'TIME TRAVEL' INTO FUTURE: PROJECTS AT HAND

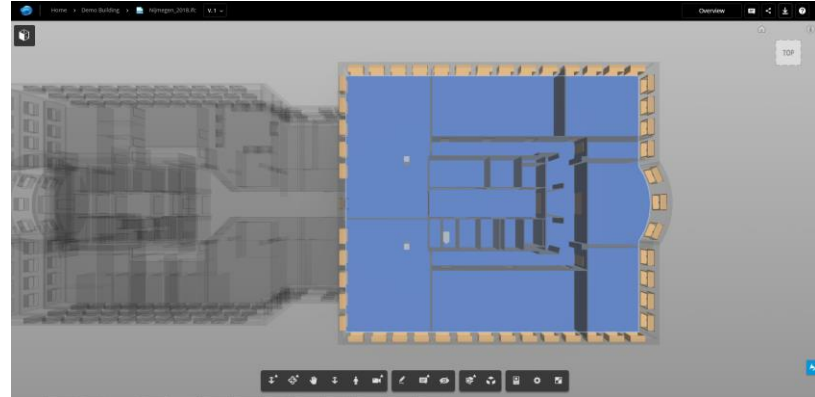
Rooms, now



Lifecycle url:

<http://a360.co/2cpe7cc>

2018



<http://a360.co/2cp9G1m>

SCENARIO'S TO USE BIM EXCHANGE

1. Get Bill of Materials at Hand-over in Planon >


- Create new building/store/plant
- Import floors/spaces for Space Management/ Rentable units/Reservations/Kiosk/Apps
- Import building elements to start Long-term Maintenance Plan (MJOP)
- Import assets to start linking calls/orders to asset / sla's and service contracts

2. Keep Revit-model in sync with Planon ><>

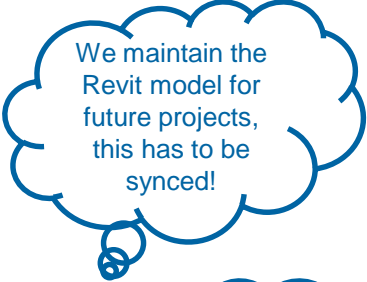
- Import base-data from Planon to identify floors/spaces/assets
- Import to Planon, export periodically with updated assets/space properties/ call history
- Export space changes, new building elements, projects

3. Scenario-planning (lifecycle BIM) <><><>


- Early involvement in a decision/design phase to export future space lay-out, maintenance plans
- Exchange Planon data to design & construction parties via model
- Smooth hand-over as the model is already classified and suited for exchange to Planon



Now we have 1
BIM model and
n buildings in
2D...



We maintain the
Revit model for
future projects,
this has to be
synced!



Let's start with
BIM for our
'rebuild'
projects!

BIM CHALLENGES



BIM - FROM PROJECT TOOL TO BUSINESS SYSTEM

'Views' of the Model

Multi-user access

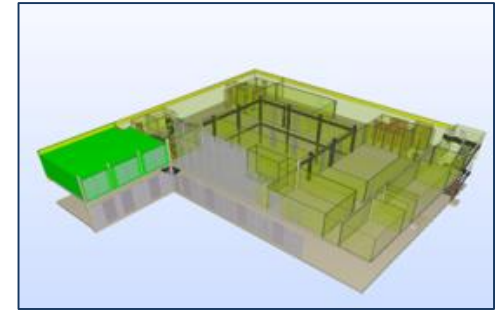
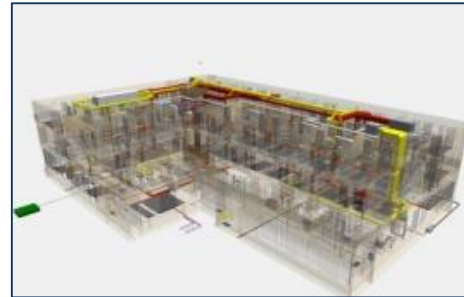
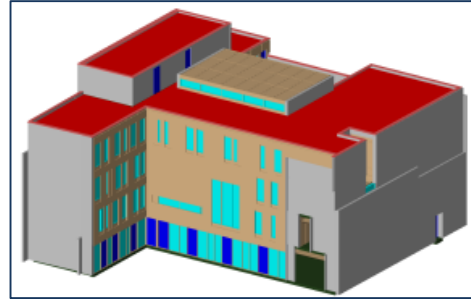
Real-time updates

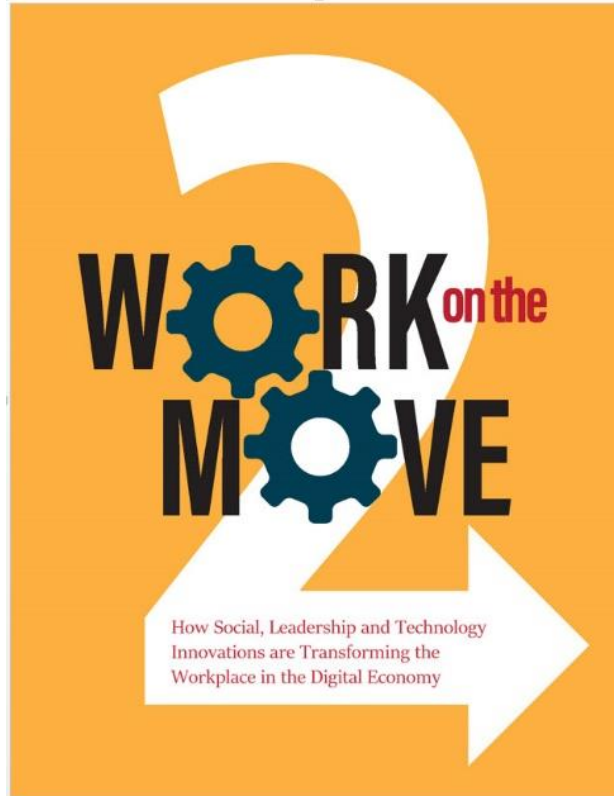
Web based access tools

Authorization

Model Size

Model Versions &
BIM SW Upgrades





How Social, Leadership and
Technology Innovations are
Transforming the Workplace
in the Digital Economy





Thank you